



Sol
Komfort
interiors®

BANLIGHT DUO FR

Vertical & Roller Blind Fabric Specification

BANLIGHT DUO FR

FIRE RETARDANT

ANTI-MILDEW COATING

BLACKOUT FABRIC

BANLIGHT DUO FR

Vertical & Roller Blind Fabric Specification

KEY FEATURES:

Fabric composition:	100% Polyester
Fire retardancy:	EN 13773 : 2003 Class 1; BS5867 - 2, Type B : 2008 for fire retardancy when tested in accordance with BS5438 : 1989
Shading:	Block-out - Recommend for computer environments
Moisture resistance:	Articide Coated - Suitable for moist conditions



STANDARD SPECIFICATIONS:

Colour range:	42
Louvre widths available:	89mm (3 ^{1/2} "); 127mm (5")
Roller fabric width:	200cm: nominal
Typical fabric weight:	330gsm - (+/-10)
Fabric thickness:	0.45mm; nominal
Colourfast:	Conforms to: BS5867 - 1 : 2004 for light fastness to Grade 6 minimum when tested in accordance with ISO 105 - B02 : 1999
Care instructions:	Wipe with damp sponge; Do not wash; Do not tumble dry; Do not Dry Clean; Do not iron

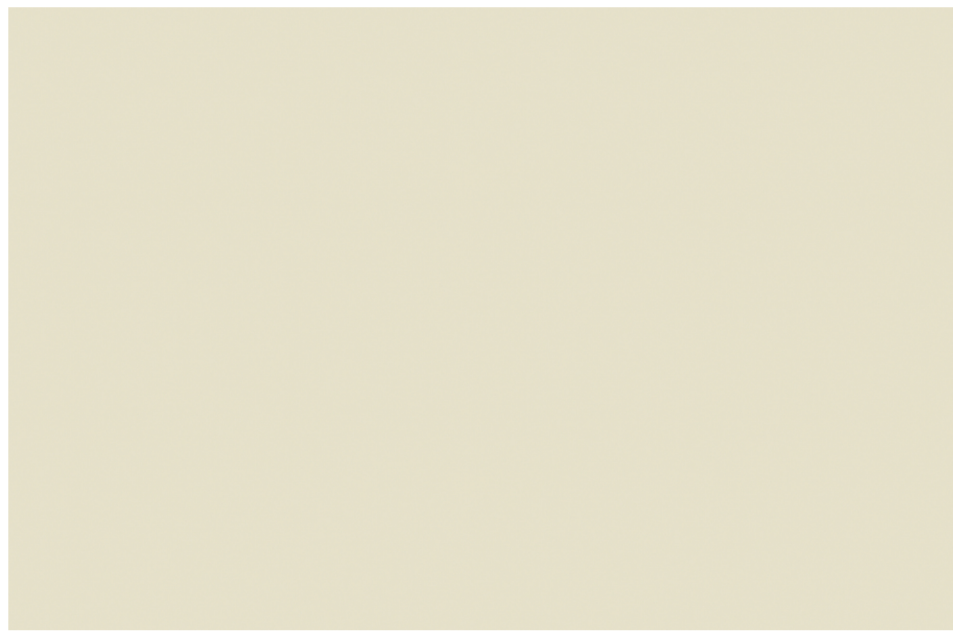
Colour	%Heat		%Light		S-C	Colour	%Heat		%Light		S-C
	T	R	T	R			T	R	T	R	
Angora	0	67	0	75	0.29	Optic White	0	69	0	82	0.27
Atlantic Blue	0	15	0	7	0.74	Orchid	0	56	0	51	0.38
Beige	0	62	0	61	0.33	Pearl	0	64	0	67	0.31
Black	0	4	0	4	0.83	Pink	0	57	0	58	0.37
Blue	0	16	0	13	0.73	Primrose	0	54	0	63	0.40
Calico	0	66	0	75	0.29	Rose	0	58	0	48	0.36
Cerise	0	13	0	30	0.76	Sand	0	37	0	39	0.55
Concrete	0	18	0	19	0.72	Scarlet	0	33	0	14	0.58
Coral	0	49	0	35	0.44	Silver	0	51	0	54	0.43
Espresso	0	9	0	9	0.79	Smokey Blue	0	47	0	49	0.46
Fresh Apple	0	54	0	60	0.40	Stone Grey	0	50	0	55	0.43
Fuschia	0	19	0	61	0.70	Sunflower	0	56	0	65	0.38
Glacier Blue	0	24	0	8	0.66	Taupe	0	37	0	34	0.55
Grape	0	18	0	32	0.71	Turquoise	0	28	0	26	0.62
Green	0	45	0	40	0.48	Vanilla	0	61	0	72	0.34
Grey	0	40	0	41	0.52	Zinc	0	11	0	10	0.78
Henna	0	47	0	32	0.46						
Iris	0	15	0	9	0.74						
Kingfisher	0	41	0	31	0.51						
Lime	0	58	0	56	0.36						
Linen	0	60	0	67	0.35						
Mandarin	0	45	0	27	0.48						
Mulberry	0	32	0	11	0.59						
Navy	0	9	0	6	0.79						
Ocean	0	32	0	12	0.59						
Old Gold	0	48	0	39	0.46						

This data is based on: Tests conducted using double glazed 6mm float glass with 12mm air space. Blinds are fully closed.

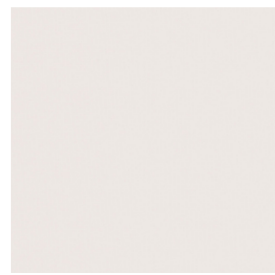
Shading co-efficients are calculated for radiation at normal incidence. Standard U value is 2.75 W/M2K = 0.49Btu/ft2hx°F.

Important: Performance data has been compiled with great care using the latest techniques. However it is advisable to check actual suitability of fabrics for a particular application before use.

In line with Eclipse's commitment to product development, specifications may be subject to change without notice.



Calico



Optic White



Coral



Fuschia



Mandarin



Scarlet



Angora



Cerise



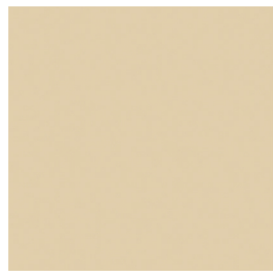
Primrose



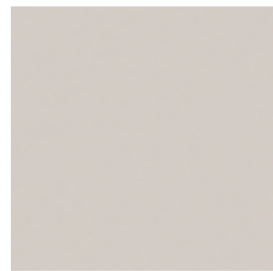
Sunflower



Fresh Apple



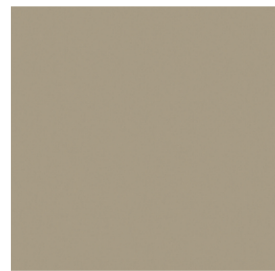
Linen



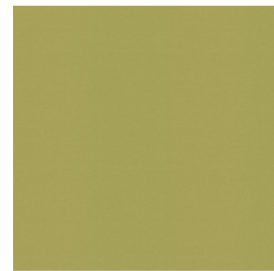
Pearl



Vanilla



Sand



Lime



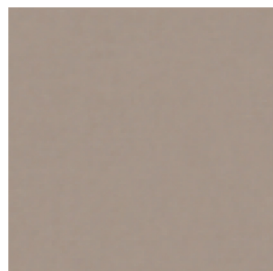
Green



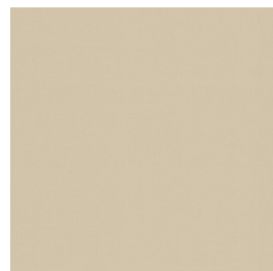
Smokey Blue



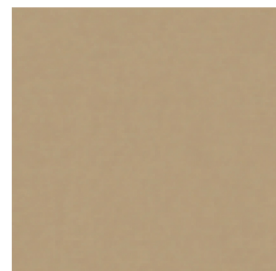
Blue



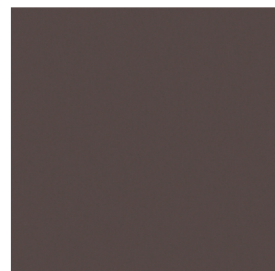
Henna



Beige



Old Gold



Espresso



Atlantic Blue



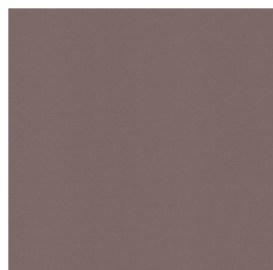
Glacier Blue



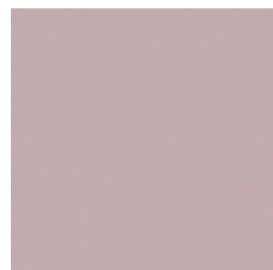
Navy



Kingfisher



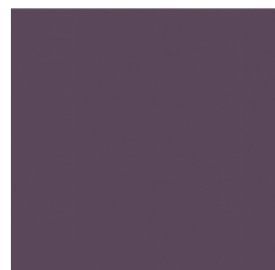
Taupe



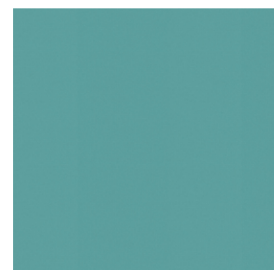
Orchid



Iris



Mulberry



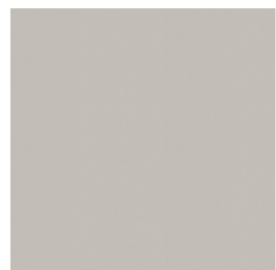
Turquoise



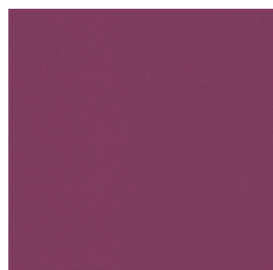
Ocean



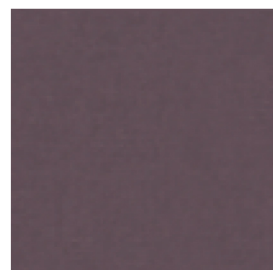
Stone Grey



Silver



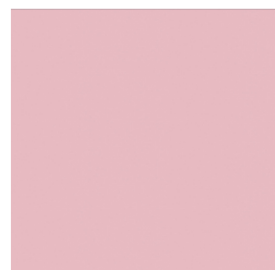
Grape



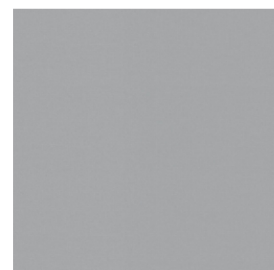
Zinc



Rose



Pink



Grey



Concrete



Black