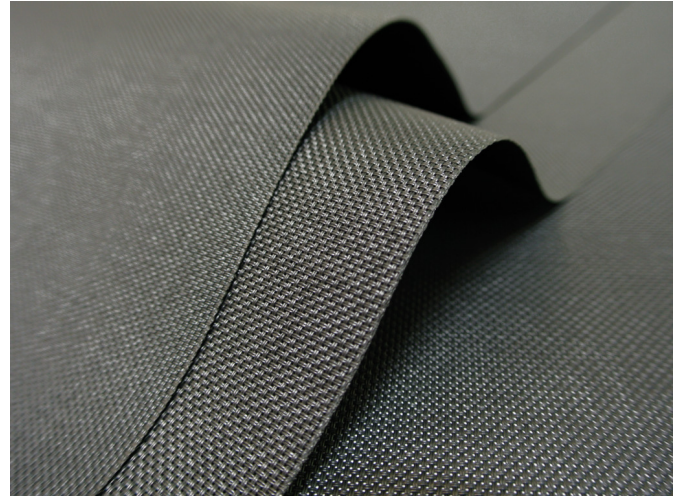


VERSASCREEN 1%, 2%, 5%, 10%

- Screen fabric with superior light control to minimise glare
- Offered in 4 openness factors to suit all building orientations
- Oeko-Tex® Standard 100 certified, free from harmful substances
- Greenguard® certification for low-emission products
- Certified mould resistance









APPLICATIONS



Not suitable: SG 4905,
SG 4900, SG 4907

FABRIC PROPERTIES

| | 1% | 2% | 5% | 10% |
|--|---------------------------------|--------------------------|--------------------------|--------------------------|
|  | Semi transparent | | | |
|  | 25% Polyester, 75% PVC | | | |
|  | 520 g/ m ² | 510 g/ m ² | 420 g/ m ² | 400 g/ m ² |
|  | 0.70 mm | 0.63 mm | 0.55 mm | 0.55 mm |
|  | 295 cm | | | |
|  | 8.9 cm, 12.7 cm, 250 cm, 300 cm | | | |

FEATURES / TECHNICAL PROPERTIES

| | |
|---|----------------------------|
|  | 8 |
|  | Flame retardant |
|  | Optimised for workstations |
|  | Various openness factors |
|  | Antimicrobial (ASTM - SGS) |
|  | Applicable in humid areas |
|  | Oeko-Tex, Greenguard |
|  | Special colours from 800 m |
|  | Weldable |

WASHING INSTRUCTIONS



Versascreen 1%, 2%, 5%, 10%
OPTICAL AND SOLAR COEFFICIENTS (± 5%, DIN EN 410)

| Versascreen 1% | | | | | | |
|----------------|-------|-------|-------|-------|-------|-----------|
| Colour | T_V | T_S | R_S | A_S | F_C | g_{tot} |
| 001 | 11.0 | 15.0 | 67.0 | 18.0 | 0.50 | 0.36 |
| 003 | 4.5 | 7.0 | 51.0 | 42.0 | 0.60 | 0.43 |
| 401 | 0.7 | 3.0 | 17.0 | 80.0 | 0.81 | 0.58 |
| 901 | 0.1 | 0.5 | 4.0 | 95.5 | 0.89 | 0.64 |

| Versascreen 2% | | | | | | |
|----------------|-------|-------|-------|-------|-------|-----------|
| Colour | T_V | T_S | R_S | A_S | F_C | g_{tot} |
| 001 | 12.0 | 16.0 | 72.0 | 12.0 | 0.47 | 0.34 |
| 003 | 5.3 | 9.0 | 50.0 | 41.0 | 0.61 | 0.44 |
| 401 | 1.1 | 3.0 | 17.0 | 80.0 | 0.81 | 0.58 |
| 901 | 0.8 | 1.0 | 4.0 | 95.0 | 0.89 | 0.64 |

| Versascreen 5% | | | | | | |
|----------------|-------|-------|-------|-------|-------|-----------|
| Colour | T_V | T_S | R_S | A_S | F_C | g_{tot} |
| 001 | 12.0 | 20.0 | 66.0 | 14.0 | 0.51 | 0.37 |
| 003 | 9.0 | 12.0 | 44.0 | 44.0 | 0.65 | 0.47 |
| 401 | 6.0 | 5.0 | 6.0 | 89.0 | 0.88 | 0.64 |
| 901 | 6.0 | 5.0 | 5.0 | 90.0 | 0.89 | 0.64 |

| Versascreen 10% | | | | | | |
|-----------------|-------|-------|-------|-------|-------|-----------|
| Colour | T_V | T_S | R_S | A_S | F_C | g_{tot} |
| 001 | 20.0 | 24.0 | 63.0 | 13.0 | 0.54 | 0.39 |
| 003 | 15.0 | 19.0 | 45.0 | 36.0 | 0.65 | 0.47 |
| 401 | 9.0 | 11.0 | 17.0 | 72.0 | 0.82 | 0.59 |
| 901 | 9.0 | 9.0 | 4.0 | 87.0 | 0.90 | 0.65 |

T_V Visible light transmission

R_S Solar reflectance

F_C Shading factor

T_S Solar transmission

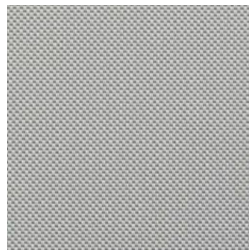
A_S Solar absorption

g_{tot} Total g-value

Fc + gtot: Value calculated with glass: 0.72 / Ug = 1.6 W/m² K, DIN EN 13363-1

Versascreen 1%, 2%, 5%, 10%

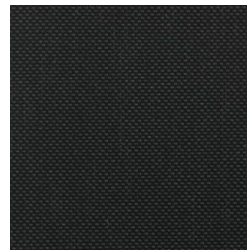
001 (1%)



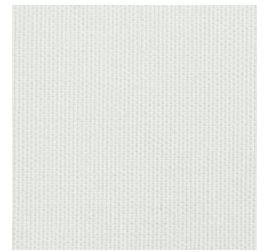
003 (1%)



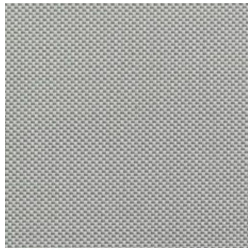
401 (1%)



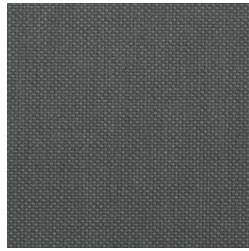
901 (1%)



001 (2%)



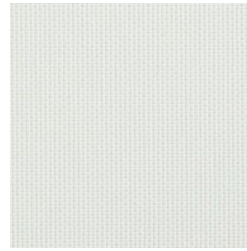
003 (2%)



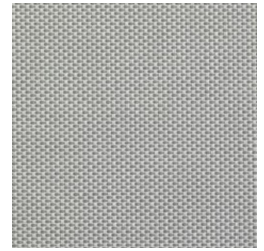
401 (2%)



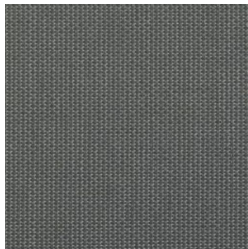
901 (2%)



001 (5%)



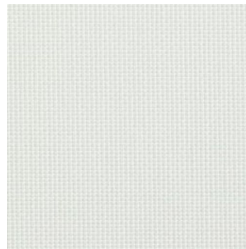
003 (5%)



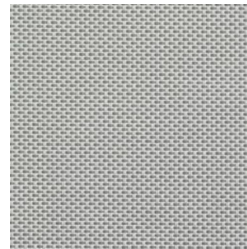
401 (5%)



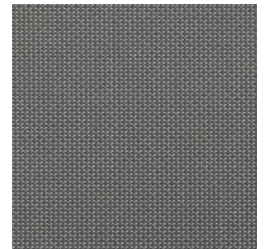
901 (5%)



001 (10%)



003 (10%)



401 (10%)



901 (10%)

Colours shown are not binding