



Sol
Komfort
interiors®

PANAMA PRO 1%, 3%, 3% XL & CHROME

Roller Blind Fabric Specification

PANAMA PRO 1%, 3% & 3% XL

WIDE WIDTH
FIRE RETARDANT
SCREEN FABRIC

PANAMA CHROME

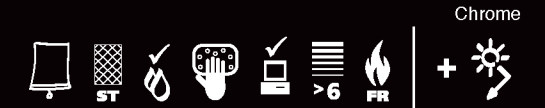
WIDE WIDTH
FIRE RETARDANT
SCREEN FABRIC
METALLISED BACKING

PANAMA PRO 1%, 3% & CHROME

Roller Blind Fabric Specification

KEY FEATURES:

Fabric composition:	64% PVC, 36% Glass
Fire retardancy:	Conforms to; BS5867 - 2, Type B : 2008 for fire retardancy when tested in accordance with BS5438 : 1989
Shading:	Screen - recommended for computer environments
Moisture resistance:	Recommended for moist conditions



STANDARD SPECIFICATIONS:

Colour range:	1% - 7, 3% - 7 (7 in XL), Chrome - 5
Louvre widths available:	N/A
Roller fabric width:	1% & 3% - 250cm: nominal (98") Chrome - 240cm: nominal (94")
XL Roller fabric width:	3% - 310cm: nominal (122")
Typical fabric weight:	1% - 424gsm - (+/-10) 3% - 390gsm - (+/-10) Chrome - 401gsm - (+/-10)
Fabric thickness:	0.50mm - nominal
Colourfast:	Conforms to: BS5867 - 1 : 2004 for light fastness to Grade 6 minimum when tested in accordance with ISO 105 - B02 : 1999
Care instructions:	Wipe with damp sponge, Do not wash, Do not tumble dry, Do not Dry Clean, Do not iron

PANAMA PRO 1%

Colour	%Heat		%Light		S-C
	T	R	T	R	
Black	1	5	1	6	0.83
Black-Pearl	1	12	1	13	0.77
Linen	15	51	11	52	0.45
Pearl	6	8	4	9	0.81
White	13	74	13	75	0.24
White-Linen	13	66	10	68	0.31
White-Pearl	8	58	7	61	0.38

PANAMA PRO 3% * Available as Panama Pro 3% XL

Colour	%Heat		%Light		S-C
	T	R	T	R	
Black*	5	4	4	7	0.84
Black-Pearl*	3	11	3	15	0.78
Linen*	18	50	14	53	0.46
Pearl*	8	31	7	34	0.61
White*	17	72	16	74	0.27
White-Linen*	16	65	14	67	0.33
White-Pearl*	12	57	11	59	0.39

PANAMA CHROME

Colour	%Heat		%Light		S-C
	T	R	T	R	
Black	3	72	3	73	0.25
Black-Pearl	3	73	3	73	0.24
White	4	72	4	74	0.25
White-Linen	3	72	3	73	0.25
White-Pearl	3	71	3	72	0.26

This data is based on:

Tests conducted using double glazed 6mm float glass with 12mm air space. Blinds are fully closed.

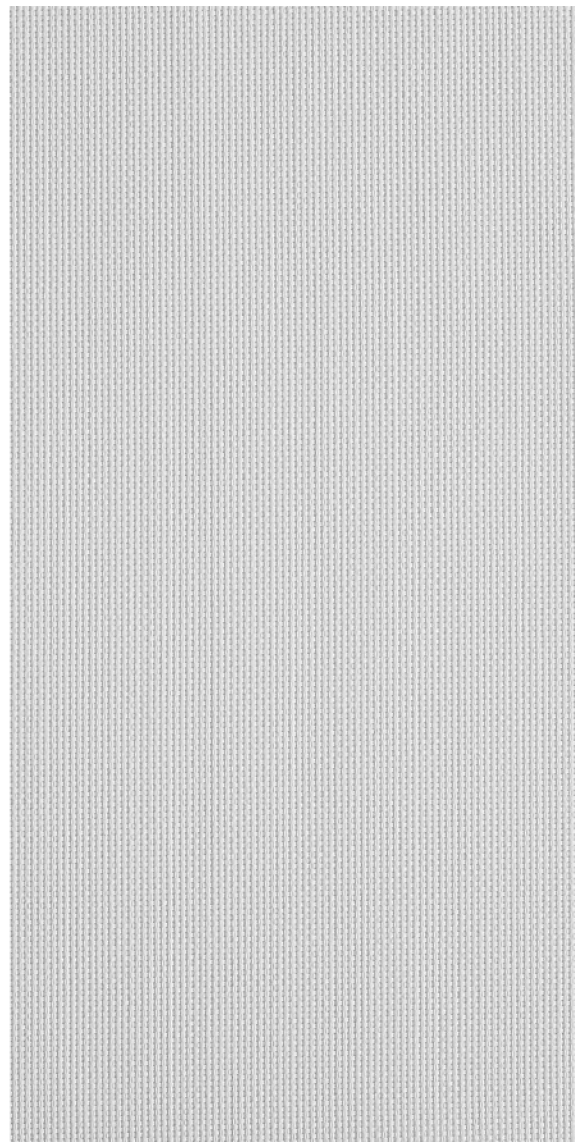
Shading co-efficients are calculated for radiation at normal incidence. Standard U value is 2.75 W/M2K = 0.49Btu/ft2hx°F.

Important: Performance data has been compiled with great care using the latest techniques. However it is advisable to check actual suitability of fabrics for a particular application before use.

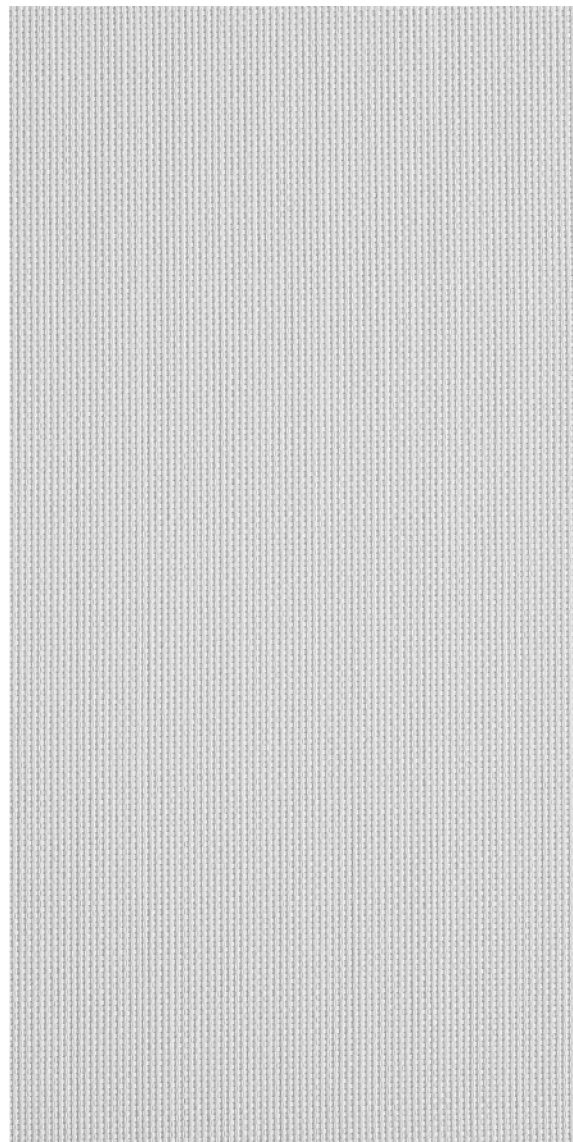
In line with Eclipse's commitment to product development, specifications may be subject to change without notice.

T = Transmitted : R = Reflected : S-C = Shading Co-efficient.

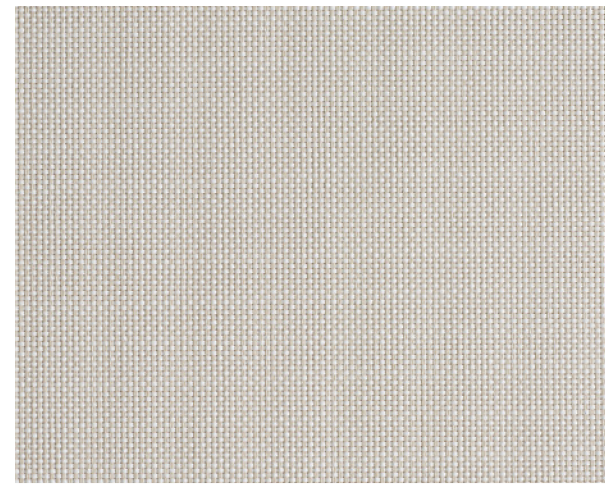
Shading Co-efficients are expressed as a decimal between 0 and 1. The lower the figure, the higher the shading efficiency of the blind.



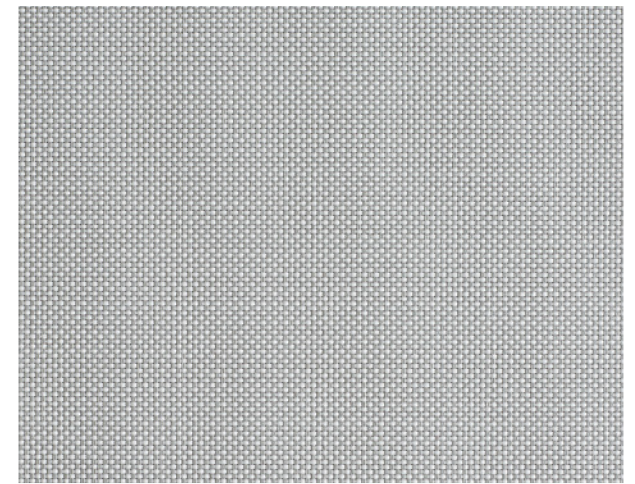
White 1%



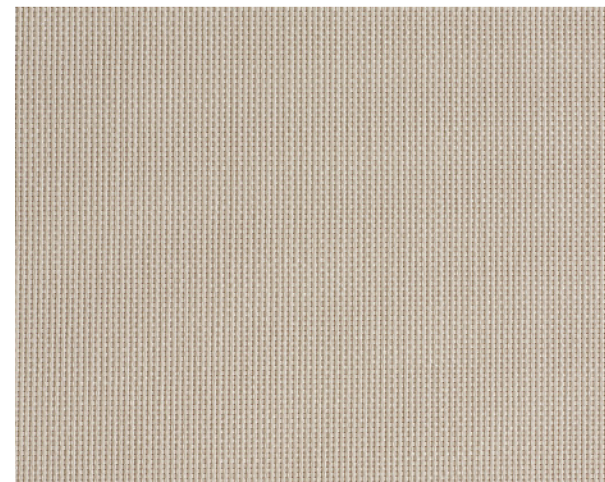
White 3%



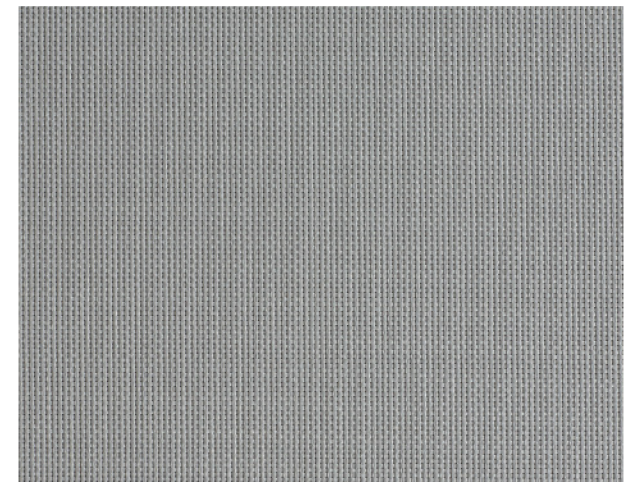
White-Linen
1%, 3% & Chrome



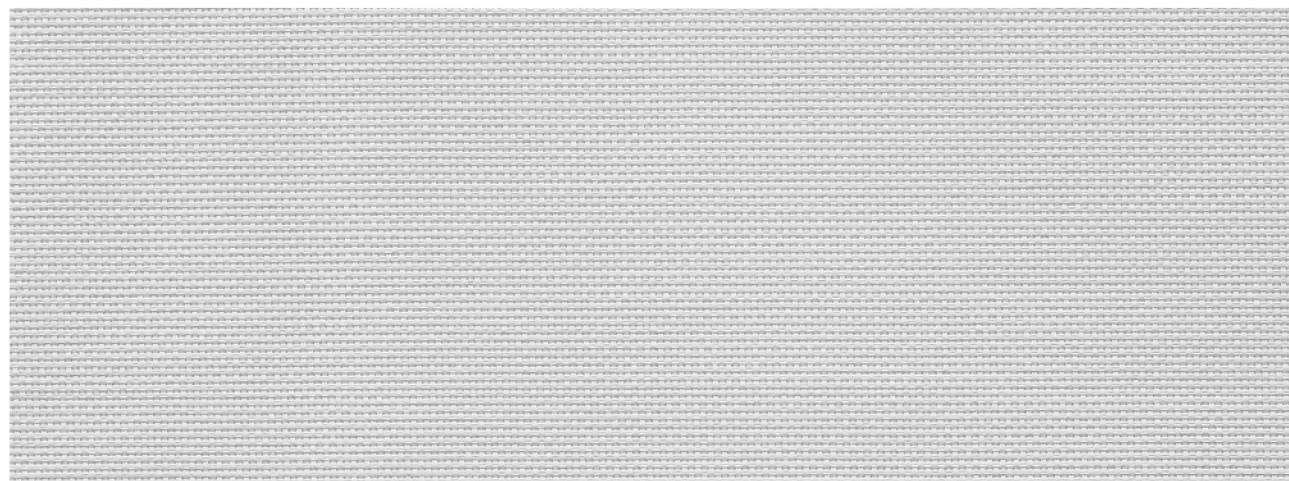
White-Pearl
1%, 3% & Chrome



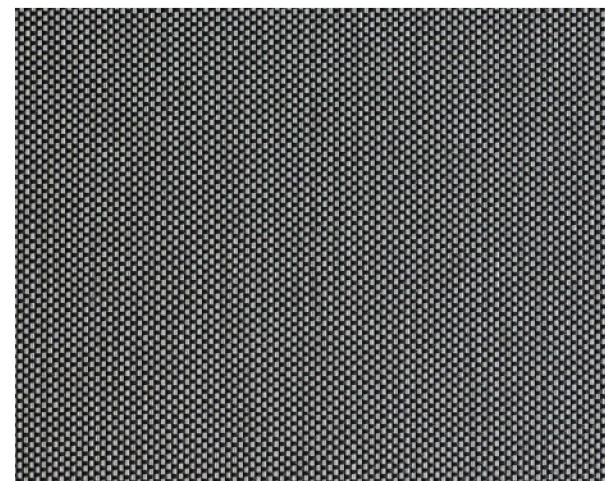
Linen
1% & 3%



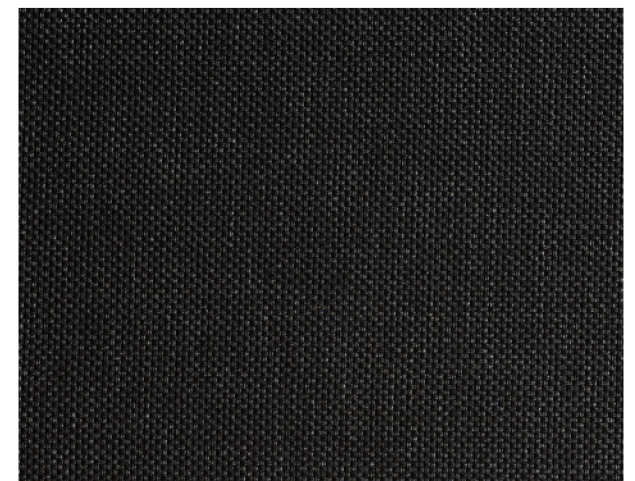
Pearl
1% & 3%



White Chrome



Black-Pearl
1%, 3% & Chrome



Black
1%, 3% & Chrome

* All 3% colours available as XL.