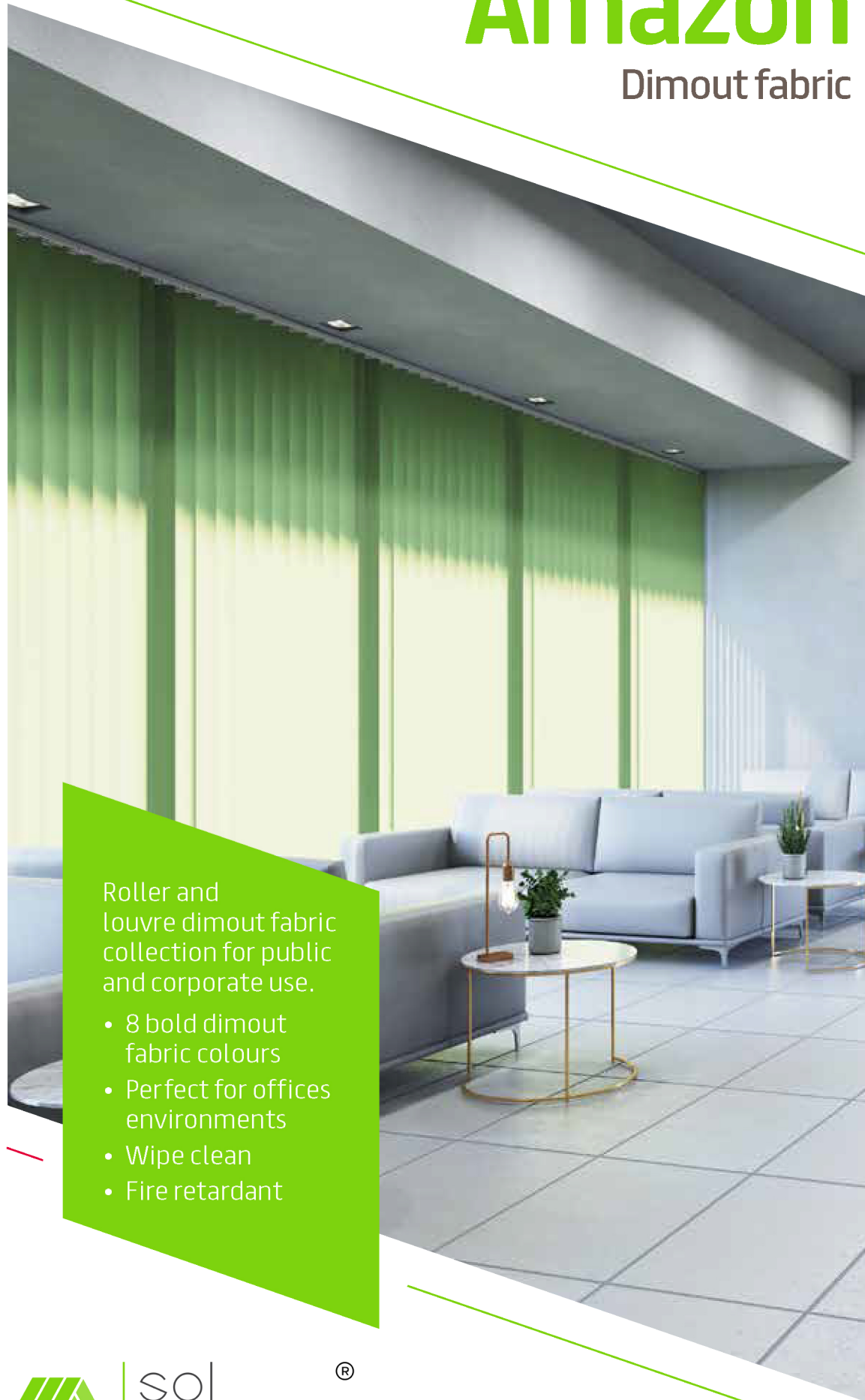


# Amazon

Dimout fabric



Roller and louvre dimout fabric collection for public and corporate use.

- 8 bold dimout fabric colours
- Perfect for offices environments
- Wipe clean
- Fire retardant

## amazon fabric

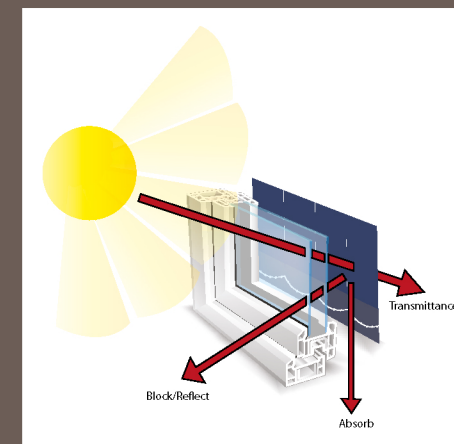
### shading efficiency

**Transmittance** is the amount of light and heat transmitted beyond the fabric. The lower the amount, the greater the efficiency.

**Block/reflect** is the amount of heat and light that is blocked or reflected. The higher the amount, the greater the efficiency.

**Absorption** is the amount of heat and light absorbed in the fabric. The higher the amount, the lower the efficiency.

**Ultraviolet** protection illustrates how protective the fabric is against ultraviolet rays. The higher the amount, the greater the effectiveness.



	2000 mm	127 mm	89 mm	Heat Transmittance %	Light Transmittance %	Sun Block %	Ultraviolet Protection %	Shading Co-efficiency %	Heat Reflection %
White				18	16	84	100	25	74
Cream				18	19	81	100	29	70
Magnolia				19	19	80	100	28	71
Beige				8	6	53	100	45	50
Grey				11	8	55	100	44	51
Dark Grey				1	0	16	100	74	15
Light Blue				8	3	39	100	49	45
Blue				5	0	10	100	65	26

## amazon fabric

The Amazon fabric is designed for areas where privacy or solar shading is needed. This fabric is 100% polyester and boasts a flame retardant composition to ensure that this fabric is suitable for many applications both commercial and domestic. The dim-out properties of this fabric allow a certain amount of light to penetrate whilst at the same time taking away the glare. Amazon fabric is available in 8 colours and in three widths – 2000mm, 127mm and 89mm. This comprehensive range has the capacity to challenge many larger collections.

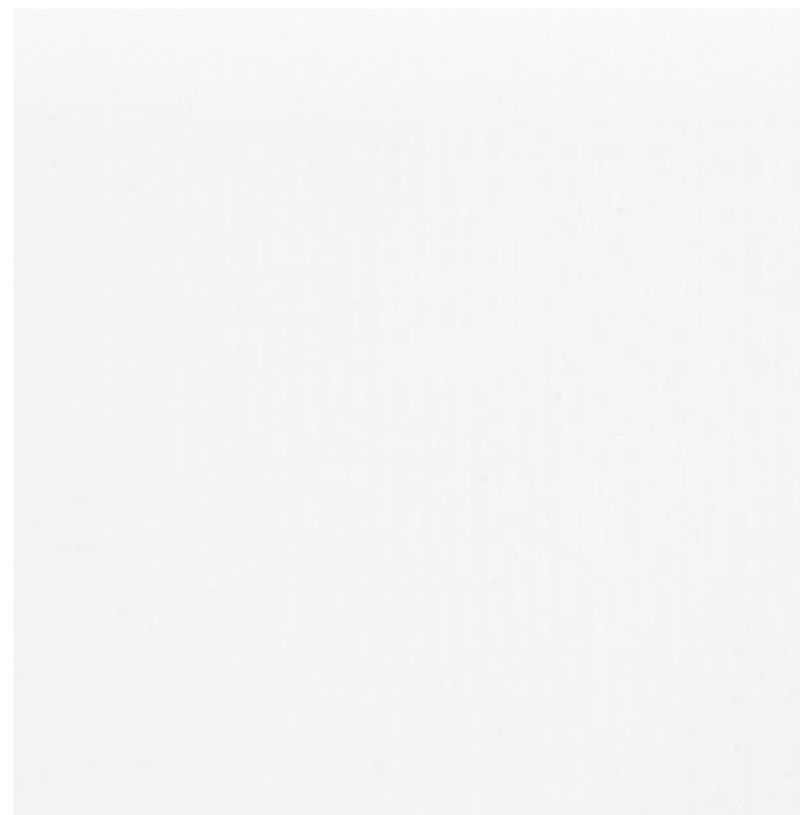
**Fabric Composition:** 100% Polyester  
**Fabric Range:** 8  
**Louvre Widths:** 127mm (5")  
 89mm (3.5")  
**Roller Fabric Width:** 2000mm (78.7")  
**Fabric Thickness:** 0.50mm - nominal  
**Fabric Weight:** 240 g/m<sup>2</sup> - (+/-10)  
**Fire Retardancy:** Conforms to BS5867,  
 Part 2: Type B 2008

**Shading:** Dim-out.  
 Recommended for computer environments

**Moisture Resistance:** Suitable for moist conditions

**Care Instructions:** Wipe with damp sponge; Do not tumble dry; Do not dry clean; Do not iron

White



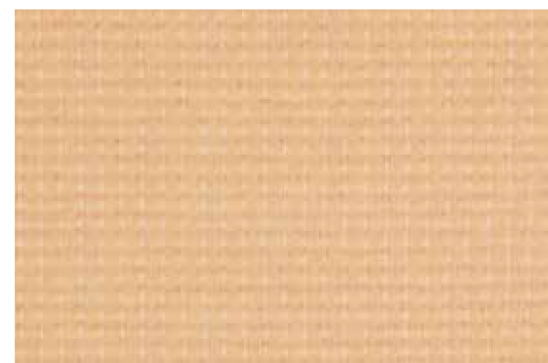
Cream



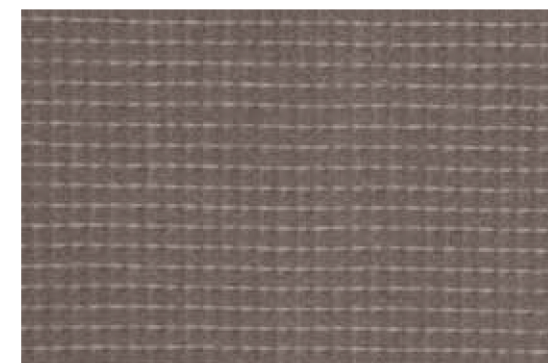
Magnolia



Beige



Dark Grey



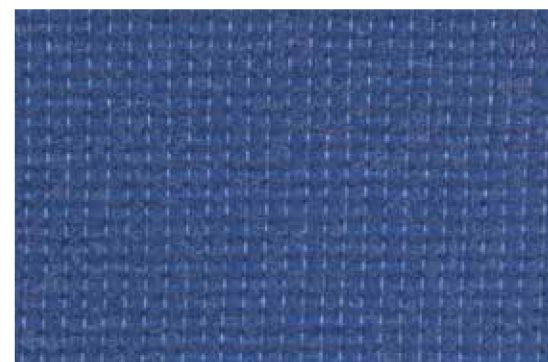
Grey



Light Blue



Blue



this fabric range comes with a full **LIFETIME Warranty** as standard.

CI/SFB 1976 reference by SFB Agency		
(76.7)	X	

