



sol
komfort
interiors®



LINEAR FR

Roller Blind Fabric Specification

WIDE WIDTH

FIRE RETARDANT

LINEAR FR

Roller Blind Fabric Specification

KEY FEATURES:

- Fabric composition:** 100% Polyester, PVC Free
- Fire retardancy:** DIN 4102 - B1; BS5867 - 2, Type B : 2008 for fire retardancy when tested in accordance with BS5438 : 1989
- Shading:** Screen - Suitable for computer environments
- Moisture resistance:** Suitable for moist conditions



STANDARD SPECIFICATIONS:

- Colour range:** 2
- Louvre widths available:** N/A
- Roller fabric width:** 280cm (110") nominal
- Typical fabric weight:** 120gsm (+/-10)
- Fabric thickness:** 0.40mm - nominal
- Colourfast:** Conforms to: BS5867 - 1 : 2004 for light fastness to Grade 6 minimum when tested in accordance with ISO 105 - B02 : 1999
- Care instructions:** Wipe with damp sponge

LINEAR FR

Colour	%Heat		%Light		S-C
	T	R	T	R	
White	64	32	63	36	0.67
Black	40	2	39	2	0.90

T = Transmitted : R = Reflected : S-C = Shading Co-efficient. Shading Co-efficients are expressed as a decimal between 0 and 1. The lower the figure, the higher the shading efficiency of the blind.

This data is based on:
Tests conducted using double glazed 6mm float glass with 12mm air space. Blinds are fully closed.

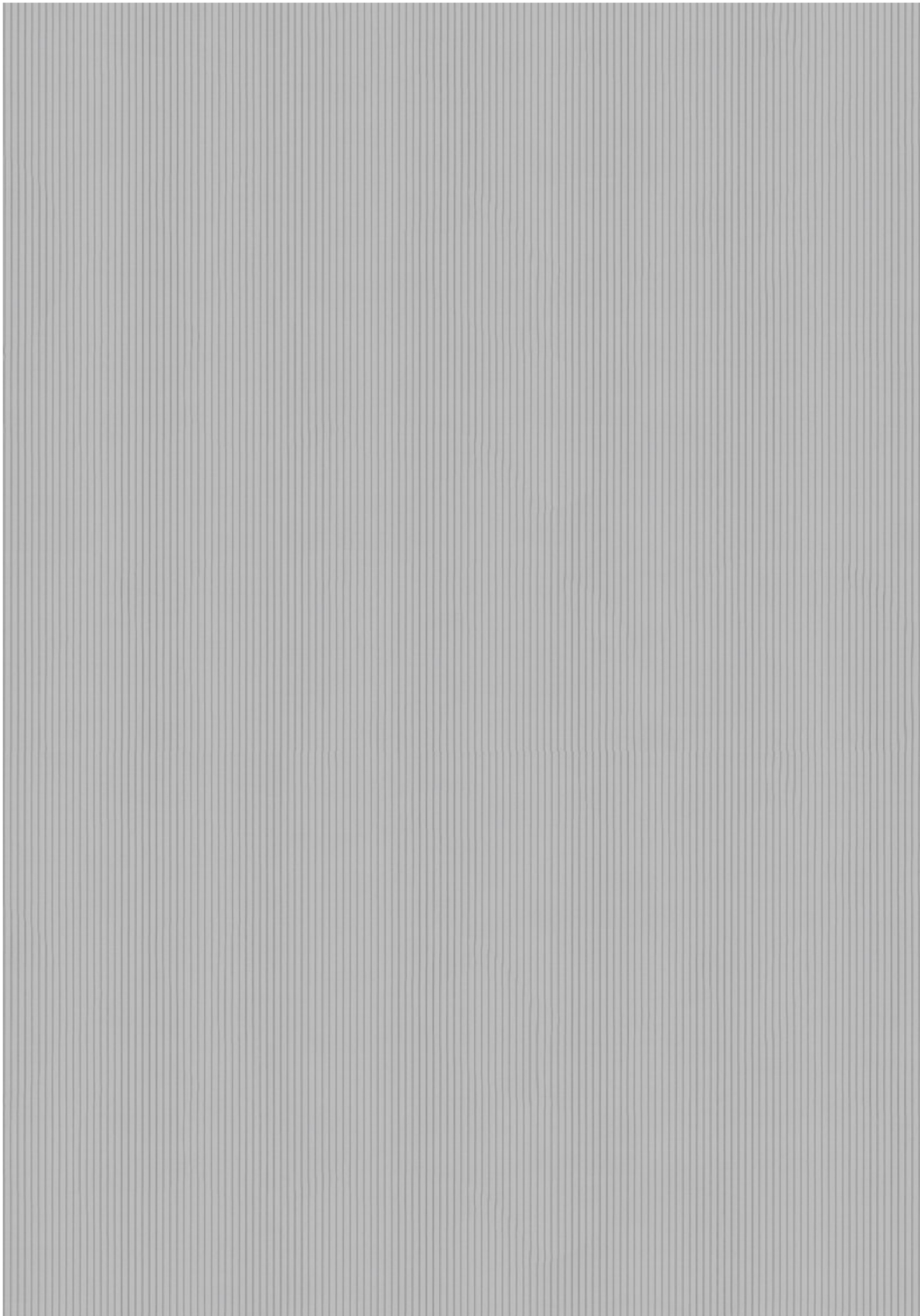
Shading co-efficients are calculated for radiation at normal incidence. Standard U value is 2.75 W/M2K = 0.49Btu/ft2hxF.

Important: Performance data has been compiled with great care using the latest techniques. However it is advisable to check actual suitability of fabrics for a particular application before use.

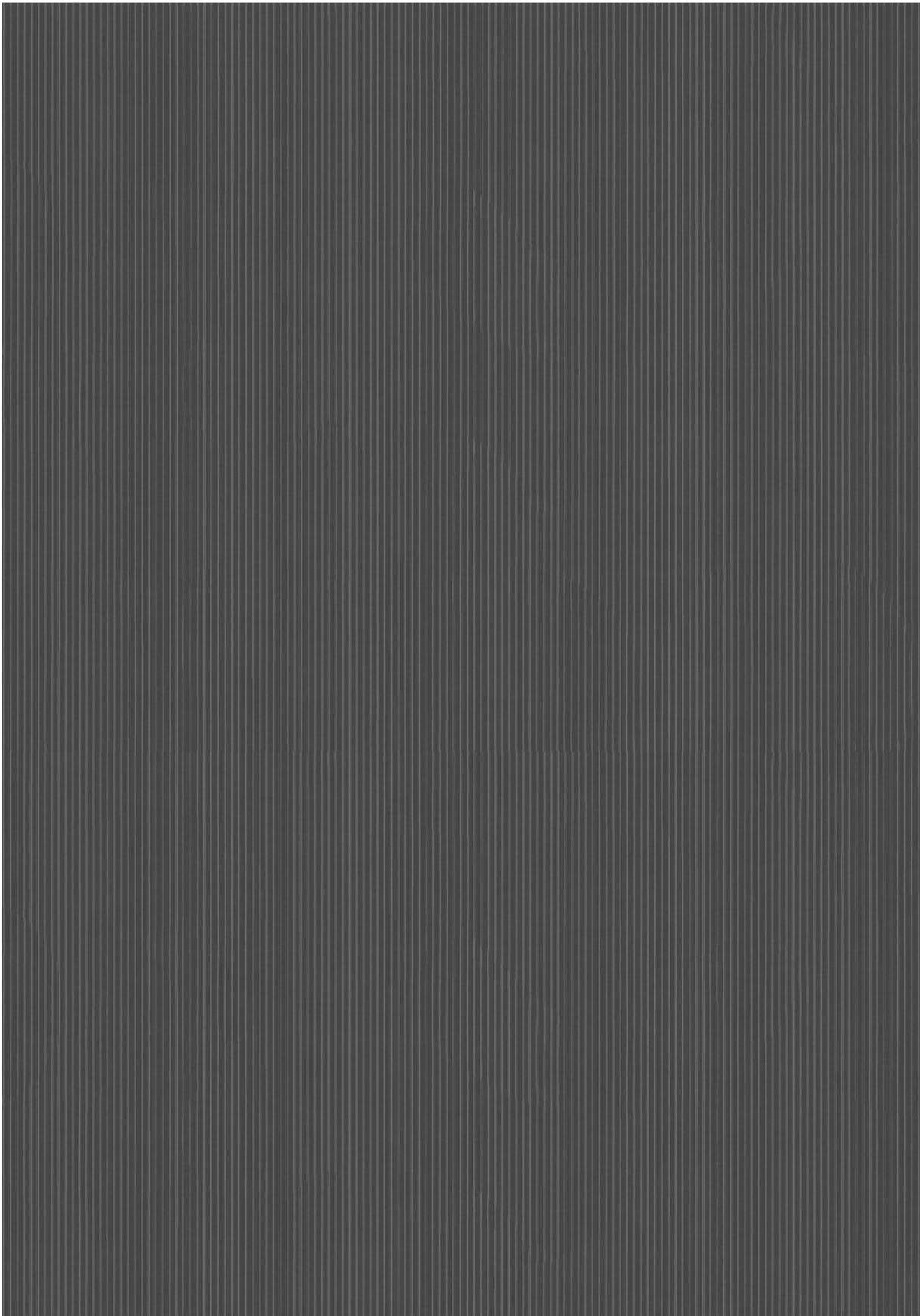
In line with Eclipse's commitment to product development, specifications may be subject to change without notice.

LINEAR FR

Roller Blind Fabric Specification



White



Black