

# SOMNIA

- Blackout fabric with subtle structured appearance
- Oeko-Tex® Standard 100 certified, free from harmful substances

## APPLICATIONS



## FABRIC PROPERTIES

● Blackout

⌘ Polyester acrylic-coated

kg 445 g/m<sup>2</sup>

+ 0.70 mm

← max. → 275 cm

🌀 280 cm

## FEATURES / TECHNICAL PROPERTIES

☀ 4-5

🔥 Flame retardant

📄 Fabric must be turned

🌿 Oeko-Tex

🎨 Special colours from 1'000 m

## WASHING INSTRUCTIONS

🧺 30 🧺 -1.5% 🧺 -0.75% 🧺 🧺

Iron only on the face (front) side!

## FLAME RETARDANT

Class 1 (EN 13773)

Class 1 (UNI 8456)

NFPA 701

Type B (BS 5867-2)



**Somnia**
**OPTICAL AND SOLAR COEFFICIENTS ( $\pm 5\%$ , DIN EN 410)**

Colour	$R_s$	$A_s$	$F_c$	$g_{tot}$
1	66.2	33.8	0.50	0.36
2	66.2	33.8	0.50	0.36
3	66.2	33.8	0.50	0.36
4	66.2	33.8	0.50	0.36
10	70.4	29.6	0.47	0.34
12	70.4	29.6	0.47	0.34
13	70.4	29.6	0.47	0.34
15	70.4	29.6	0.47	0.34
16	70.4	29.6	0.47	0.34
18	62.6	37.4	0.52	0.37
20	62.6	37.4	0.52	0.37
21	62.6	37.4	0.52	0.37
22	70.4	29.6	0.47	0.34
23	66.2	33.8	0.50	0.36
24	62.6	37.4	0.52	0.37

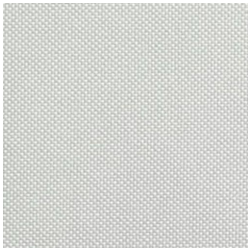
 $R_s$  Solar reflectance

 $A_s$  Solar absorption

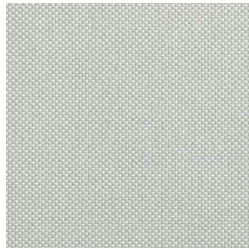
 $F_c$  Shading factor

 $g_{tot}$  Total g-value

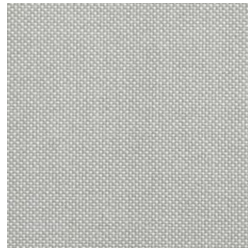
 $F_c + g_{tot}$ : Value calculated with glass:  $0.72 / U_g = 1.6 \text{ W/m}^2 \text{ K}$ , DIN EN 13363-1

**Somnia**

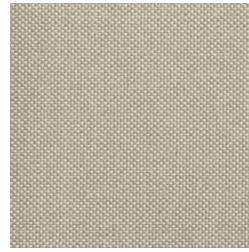
1



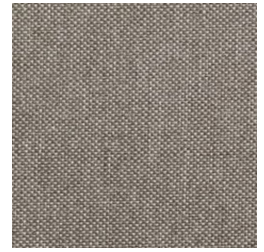
2



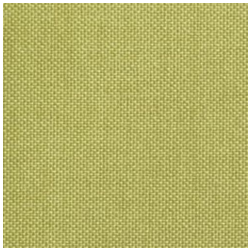
3



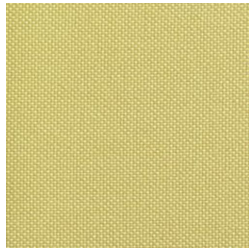
4



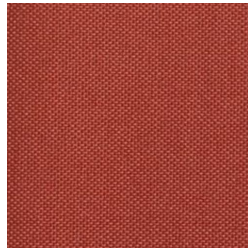
10



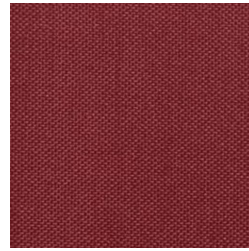
12



13



15



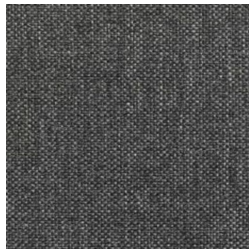
16



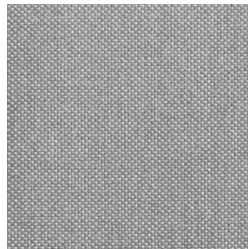
18



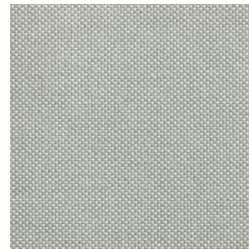
20



21



22



23



24

Colours shown are not binding