

## SOLAR AND OPTICAL PROPERTIES

### SOLAR GAIN

The amount of heat increase resulting from solar energy entering a room. It is the total of three separate parts - the amount of energy transmitted directly into the room, the energy which is absorbed by the blind and a proportion of the energy which is absorbed by the window.

### SHADING CO-EFFICIENT

The solar heat gain with the blind at the window divided by the solar heat gain with no blind at the window. The lower the shading co-efficient, therefore, the higher the efficiency of the fabric.

UNIVIEW® SOLAR AND OPTICAL PERFORMANCE																	
	Solar			Visible			UV	QRF	CF	GTOT				SC			
	RS %	TS %	AS %	RV %	TV %	AV %	Block %			SG	DG	TG	DGLE	SG	DG	TG	DGLE
<b>Uniview® 1300</b>																	
Crystal	73	11	16	84	8	8	99	8	5+	0.28	0.32	0.33	0.33	0.33	0.36	0.37	0.38
Alabaster	69	11	21	77	6	16	99	7	5+	0.31	0.34	0.35	0.35	0.36	0.39	0.40	0.40
Beige	63	11	25	71	7	21	99	7	5+	0.35	0.37	0.37	0.38	0.40	0.43	0.42	0.44
Cool Grey	55	8	37	63	5	33	98	6	5+	0.37	0.40	0.39	0.41	0.43	0.46	0.45	0.47
Soft Steel	39	5	56	43	2	55	99	4	5+	0.45	0.47	0.45	0.48	0.52	0.54	0.52	0.55
Pearl Grey	51	7	42	58	4	38	99	5	5+	0.39	0.41	0.40	0.42	0.45	0.48	0.46	0.49
Stellar	7	1	92	8	1	91	99	1	5+	0.61	0.61	0.56	0.61	0.70	0.70	0.64	0.70
Jet	4	2	94	4	2	94	98	0	5+	0.63	0.63	0.57	0.63	0.72	0.72	0.66	0.72
<b>Uniview® 1100</b>																	
Shadow	35	7	58	37	4	59	99	4	5+	0.33	0.36	0.36	0.37	0.38	0.42	0.42	0.43
Winter White	72	12	16	83	9	8	99	8	5+	0.29	0.32	0.33	0.33	0.33	0.37	0.38	0.38
Canola	67	12	21	75	8	17	99	7	5+	0.31	0.34	0.34	0.35	0.35	0.39	0.39	0.40
Storm	25	5	70	27	3	70	99	3	5+	0.35	0.38	0.38	0.39	0.40	0.43	0.43	0.45
Nutmeg	19	4	76	21	3	76	99	2	5+	0.36	0.39	0.38	0.40	0.41	0.45	0.44	0.46
Twilight	16	3	81	18	3	79	99	2	5+	0.36	0.39	0.39	0.40	0.42	0.45	0.45	0.46

### GLOSSARY

**T:** % Transmittance.

**R:** % Reflectiveness.

**A:** % Absorption.

**UV Block:** Percentage of UV light blocked by the fabric.

**QRF:** Quick Reference Factor.

**CF:** Colour Fastness.

**gtot:** The solar factor entering a building through a window and the shading device combined.

**SC:** Shading Co-efficient.

**SG:** Single Glazing.

**DG:** Double Glazing.

**TG:** Triple Glazing.

**DGLE:** Double Glazing Low Emissivity.



sol  
komfort  
interiors

# UNIVIEW®

1300

1100

1%

UNIVIEW®

UNIVIEW® 1300



CRYSTAL

RPU723 - 1.83m  
RPU731 - 2.50m  
RPU739 - 3.00m



ALABASTER

RPU728 - 1.83m  
RPU736 - 2.50m  
RPU744 - 3.00m



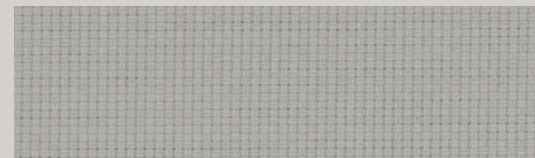
BEIGE

RPU722 - 1.83m  
RPU730 - 2.50m  
RPU738 - 3.00m



COOL GREY

RPU729 - 1.83m  
RPU737 - 2.50m  
RPU745 - 3.00m



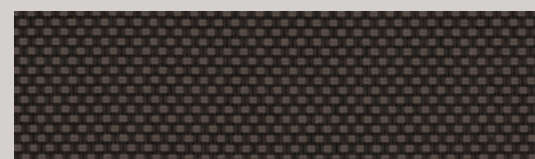
SOFT STEEL

RPU727 - 1.83m  
RPU735 - 2.50m  
RPU743 - 3.00m



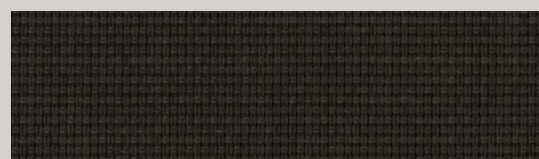
PEARL GREY

RPU724 - 1.83m  
RPU732 - 2.50m  
RPU740 - 3.00m



STELLAR

RPU726 - 1.83m  
RPU734 - 2.50m  
RPU742 - 3.00m



JET

RPU725 - 1.83m  
RPU733 - 2.50m  
RPU741 - 3.00m

UNIVIEW® 1300

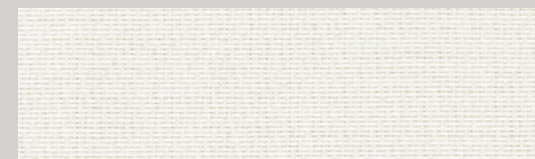
Also available in 3%  
(Uniview 3000)

UNIVIEW® 1100



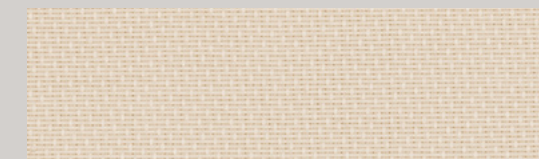
SHADOW

RPU750 - 1.83m  
RPU756 - 2.50m  
RPU762 - 3.00m



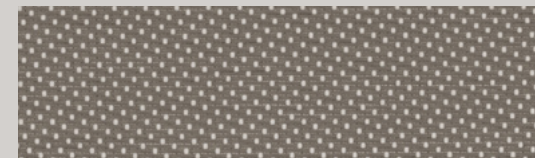
WINTER WHITE

RPU753 - 1.83m  
RPU759 - 2.50m  
RPU765 - 3.00m



CANOLA

RPU754 - 1.83m  
RPU760 - 2.50m  
RPU766 - 3.00m



STORM

RPU751 - 1.83m  
RPU757 - 2.50m  
RPU763 - 3.00m



NUTMEG

RPU749 - 1.83m  
RPU755 - 2.50m  
RPU761 - 3.00m



TWILIGHT

RPU752 - 1.83m  
RPU758 - 2.50m  
RPU764 - 3.00m

UNIVIEW® 1100

Due to the nature of the weave, the exterior of all Uniview® 1100 are white.

Also available in 3% (Uniview 3100)

UNIVIEW®

1300  
1100

1%

Uniview® 1300 and 1100 fabrics are designed to satisfy the highest technical and aesthetic standards as demanded by today's residential, commercial, educational and healthcare applications.

Providing the best in transparent solar shading solutions, Uniview® fabrics are durable, washable and will not fray. Achieving the BS5867: 2008 Part 2 Type B standard for flammability standard, Uniview is also non-toxic, UV and bacteria resistant.

UNIVIEW® SPECIFICATIONS

Series	1300	1100
Colour Range	8	6
Roller Roll Length	25-35m	25-35m
Roller Roll Width	1.83m / 2.5m / 3m	1.83m / 2.5m / 3m
Fabric Composition	30% Polyester, 70% PVC	30% Polyester, 70% PVC
Mesh/cm	24 x 20	24 x 20
Mesh Weight	490g/m <sup>2</sup>	480g/m <sup>2</sup>
Yarn Diameter	0.32mm	0.32mm
Thickness	0.61mm	0.62mm
Breaking Strength	438lbs x 370lbs /5CM ISO13934-1	438lbs x 370lbs /5CM ISO13934-1
Openness Factor	1%	1%
Care & Washing	Do not soak. Clean by gently wiping with a sponge.	Do not soak. Clean by gently wiping with a sponge.
Colour Fastness	BS EN ISO 105 - B02: 2014 (colour fastness to artificial light Std 5)	BS EN ISO 105 - B02: 2014 (colour fastness to artificial light Std 5)
Flammability Standards	BS5867 (2008 Part 2, Type B), B1 DIN-4102	BS5867 (2008 Part 2, Type B), B1 DIN-4102
Anti-Fungal	ASTM G21	ASTM G21
Property	Dim Out	Dim Out
Samples	Fabric samples available on request	Fabric samples available on request

